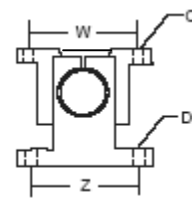
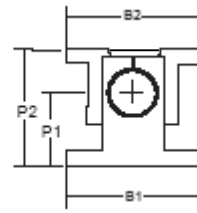
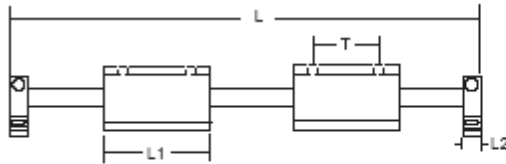
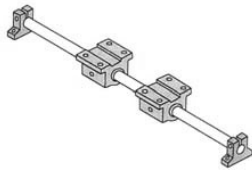


STAGE 1 TYPE A & B - END SUPPORTED SYSTEM

Type A / Single Pillow Blocks



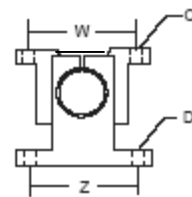
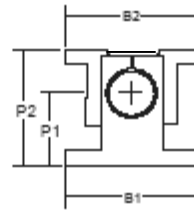
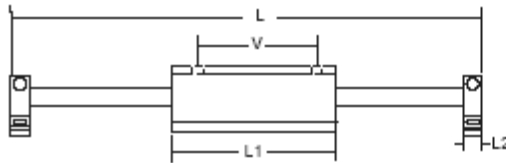
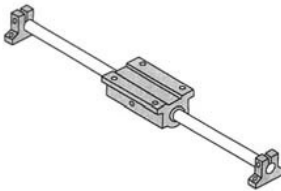
Unit: inch

Part No.	Dia.	(lbs.) Max. Load *	L	L1	L2	B1	B2	P1	P2	W	T	Z	C Thru Hole / Bolt Size	D Thru Hole / Bolt Size
1A-04	0.250	120	See Below	1.19	0.50	1.50	1.63	0.688	1.125	1.312	0.750	1.12	0.156 / #6	0.156 / #6
1A-06	0.375	190		1.31	0.56	1.63	1.75	0.750	1.250	1.437	0.875	1.25	0.156 / #6	0.156 / #6
1A-08	0.500	460		1.69	0.63	2.00	2.00	1.000	1.687	1.688	1.000	1.50	0.156 / #6	0.188 / #8
1A-10	0.625	800		1.94	0.69	2.50	2.50	1.000	1.875	2.125	1.125	1.88	0.188 / #8	0.218 / #10
1A-12	0.750	940		2.06	0.75	2.50	2.75	1.250	2.187	2.375	1.250	2.00	0.188 / #8	0.218 / #10
1A-16	1.000	1700		2.81	1.00	3.06	3.25	1.500	2.687	2.875	2.875	1.750	2.50	0.219 / #10

* Based on a travel of 2 million inches.

System Type	Standard System Lengths (L)						
Stage 1 - A	12"	18"	24"	30"	36"	42"	48"

Type B / Double Wide Pillow Blocks



Unit: inch

Part No.	Dia.	(lbs.) Max. Load *	L	L1	L2	B1	B2	P1	P2	W	V	Z	C Thru Hole / Bolt Size	D Thru Hole / Bolt Size
1B-04	0.250	96	See Below	2.50	0.50	1.50	1.630	0.688	1.125	1.312	2.000	1.12	0.156 / #6	0.156 / #6
1B-06	0.375	150		2.75	0.56	1.63	1.750	0.750	1.250	1.437	2.250	1.25	0.156 / #6	0.156 / #6
1B-08	0.500	370		3.50	0.63	2.00	2.000	1.000	1.687	1.688	2.500	1.50	0.156 / #6	0.188 / #8
1B-10	0.625	640		4.00	0.69	2.50	2.500	1.000	1.875	2.125	3.000	1.88	0.188 / #8	0.218 / #10
1B-12	0.750	750		4.50	0.75	2.50	2.750	1.250	2.187	2.375	3.500	2.00	0.188 / #8	0.218 / #10
1B-16	1.000	1360		6.00	1.00	3.06	3.250	1.500	2.687	2.875	4.500	2.50	0.219 / #10	0.281 / 1/4

* Based on a travel of 2 million inches.

Travel length is calculated by subtracting the pillow block length (L1) and both the end support block length (L2) from the total system length (L).

System Type	Standard System Lengths (L)						
Stage 1 - B	12"	18"	24"	30"	36"	42"	48"