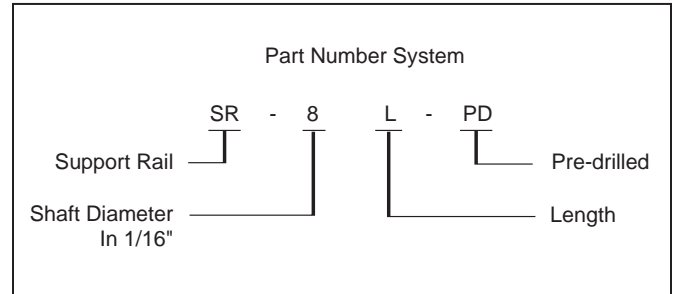


SRPD SERIES

Pre-drilled support rail assemblies from SMI are constructed from hardened and precision ground C1060 carbon steel with a hardness range from 60-65 RC, 6061 Aluminum support system designed to accommodate any open style bushing and pillow block on today's market. SMI's pre-drilled support rails are machined to provide top down mounting and each rail exceeds current competitive manufacture tolerances for straightness, twist and bow. Each SMI assembly is 100% inspected to this higher level and each product is delivered with our assurance for accuracy and conformance.

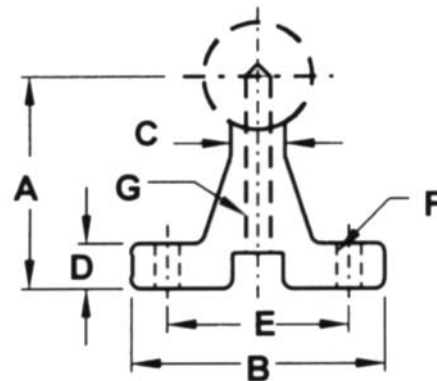
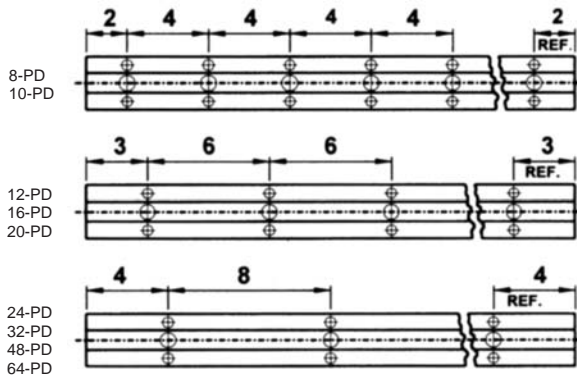
Pre-drilled Support Rail Options:

- **Corrosion Resistant Support Rail Assemblies:** Shafting can be made from 440C with 52-55 RC hardness.
- **Anodization:** Clear, Black or color of your choice. Please allow adequate time for processing.
- **Special mounting holes:** SMI offers standard hole patterns, but if you need something special, just ask.
- **Part Number Identification or Custom engraving** on each rail assembly is no problem.
- **End of travel co-axial bumpers** can be accommodated per your request.
- **Complete Shaft Rail Assemblies with Bearings included:** See SMI LM System Section of this catalog.
- **Creative options** we have not thought of and you might require. We are always looking for good ideas.



Mounting Hole Patterns

for various sizes shown below. The alignment and location of holes are ± 0.010 non-cumulative.



Unit: inch

Part No.	Nominal Dia.	A (± 0.002)	B	C	D	E	F		G		Weight / 24" (lbs.)
							Bolt	Hole	Bolt	Hole	
SR-8-PD	1/2	1.125	1-1/2	1/4	3/16	1	#6	0.169	8-32 x 7/8	0.169	1.2
SR-10-PD	5/8	1.125	1-5/8	5/16	1/4	1-1/8	#8	0.193	8-32 x 7/8	0.193	1.5
SR-12-PD	3/4	1.500	1-3/4	3/8	1/4	1-1/4	#10	0.221	10-32 x 1-1/4	0.221	2.0
SR-16-PD	1	1.750	2-1/8	1/2	1/4	1-1/2	1/4	0.281	1/4-20 x 1-1/2	0.281	2.6
SR-20-PD	1-1/4	2.125	2-1/2	9/16	5/16	1-7/8	5/16	0.343	5/16-18 x 1-3/4	0.343	3.5
SR-24-PD	1-1/2	2.500	3	11/16	3/8	2-1/4	5/16	0.343	3/8-16 x 2	0.406	5.1
SR-32-PD	2	3.250	3-3/4	7/8	1/2	2-3/4	3/8	0.406	1/2-13 x 2-1/2	0.531	8.2
SR-48-PD	3	4.000	6	1-3/8	3/4	4-1/4	5/8	0.656	3/4-10 x 3-1/4	0.781	15.3
SR-64-PD	4	5.000	8	2-1/4	1-3/8	6	5/8	0.656	7/8-9 x 4	0.781	38.9