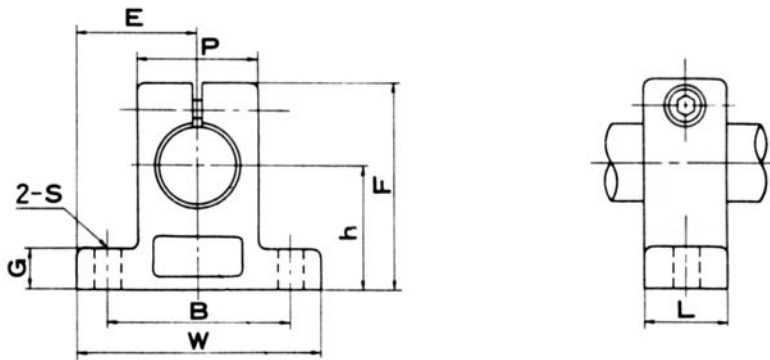
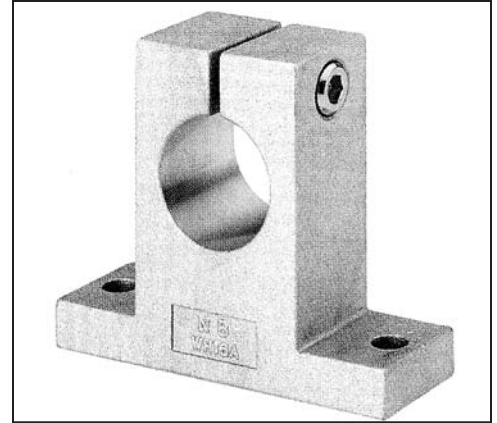


WH SERIES

Material: Aluminum alloy

Inner Contact Diameter: $\varnothing 1/4"$ to $2"$



Unit: inch

Part No.	Nominal Dia.	h (± 0.001)	E (± 0.0005)	W	L	F	G	P	B	S	Bolt	Weight (lbs.)
WH4A	1/4	0.6875	0.7500	1.5000	0.500	1.063	0.250	0.500	1.125	0.156	#6	0.033
WH6A	3/8	0.7500	0.8125	1.6250	0.563	1.187	0.250	0.688	1.250	0.156	#6	0.046
WH8A	1/2	1.0000	1.0000	2.0000	0.625	1.625	0.250	0.875	1.500	0.188	#8	0.077
WH10A	5/8	1.0000	1.2500	2.5000	0.688	1.750	0.313	1.000	1.875	0.218	#10	0.115
WH12A	3/4	1.2500	1.2500	2.5000	0.750	2.063	0.313	1.250	2.000	0.218	#10	0.163
WH16A	1	1.5000	1.5315	3.0630	1.000	2.500	0.375	1.500	2.500	0.281	1/4	0.300
WH20A	1-1/4	1.7500	1.8750	3.7500	1.125	3.000	0.438	2.000	3.000	0.346	5/16	0.560
WH24A	1-1/2	2.0000	2.1875	4.3750	1.250	3.437	0.500	2.250	3.500	0.346	5/16	0.750
WH32A	2	2.5000	2.7500	5.5000	1.500	4.375	0.625	3.000	4.500	0.406	3/8	1.477