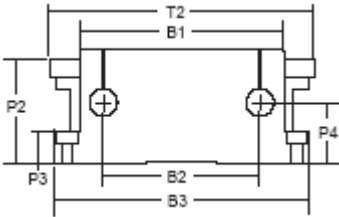
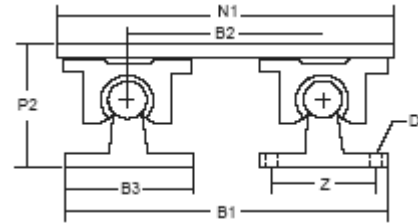
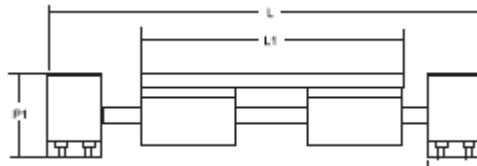
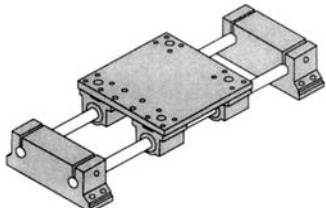


# STAGE 3 TYPE A - END SUPPORTED SYSTEM

Type A / Single Pillow Blocks



Unit: inch

Travel	Overall System Length (L)			
	3A-08	3A-10	3A-12	3A-16
6	13.5	14.5	16.1	17.6
12	19.5	20.5	22.1	23.6
18	25.5	26.5	28.1	29.6
24	31.5	32.5	34.1	35.6
30	37.5	38.5	40.1	41.6
36	43.5	44.5	46.1	47.6
42	49.5	50.5	52.1	53.6

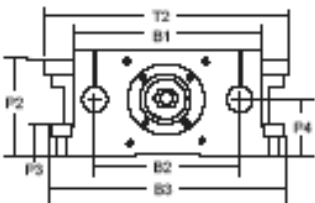
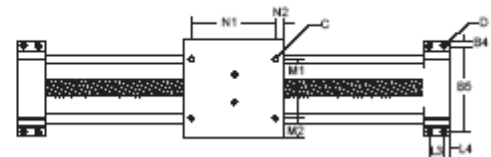
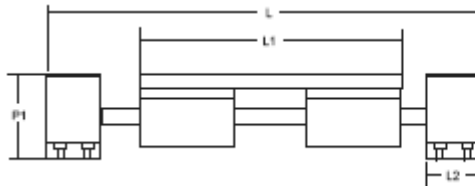
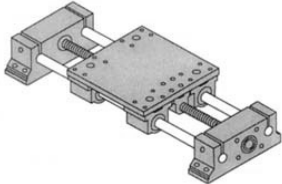
Unit: inch

Part No.	Dia.	(lbs.) Max Load*	L	L1	L2	L3	L4	B1	B2	B3	B4	B5	M1	M2	N1	N2	P1	P2	P3	P4	T2	C	D Thru Hole / Bolt Size
3A-08	0.50	920	See Below	5.50	1.00	0.5	0.22	4.25	3.25	5.30	0.25	4.80	3.25	1.12	4.50	0.50	2.38	2.18	0.50	1.125	5.50	1/4-20	0.19 / #8
3A-10	0.62	1600		6.50	1.00	0.5	0.22	5.00	3.75	6.25	0.25	5.75	3.75	1.37	5.25	0.63	2.38	2.37	0.60	1.313	6.50	1/4-20	0.19 / #8
3A-12	0.75	1880		7.50	1.30	0.8	0.25	6.00	4.50	7.20	0.25	6.70	4.50	1.50	6.00	0.75	2.75	2.93	0.75	1.500	7.50	5/16-	0.22 / #10
3A-16	1.00	3400		9.00	1.30	0.7	0.28	7.25	5.50	8.70	0.35	8.00	5.50	1.75	7.00	1.00	3.37	3.43	0.75	1.750	9.00	3/8-16	0.28 / 1/4

\* Based on a travel of 2 million inches.

# STAGE 3 TYPE B - END SUPPORTED SYSTEM WITH BALL SCREW

Type B / Single Pillow Blocks



Unit: Inch

Travel	Overall System Length (L)			
	3B-08	3B-10	3B-12	3B-16
6	13.5	14.5	16.1	17.6
12	19.5	20.5	22.1	23.6
18	25.5	26.5	28.1	29.6
24	31.5	32.5	34.1	35.6
30	37.5	38.5	40.1	41.6
36	43.5	44.5	46.1	47.6
42	49.5	50.5	52.1	53.6

Various ball screw & lead screw options available. Please specify screw lead when ordering or call SMI for available options.

Unit: inch

Part No.	Dia.	(lbs.) Max Load*	L	L1	L2	L3	L4	B1	B2	B3	B4	B5	M1	M2	N1	N2	P1	P2	P3	P4	T2	C	D Thru Hole / Bolt Size
3B-08	0.500	920	See Below	5.50	1.00	0.56	0.22	4.25	3.25	5.30	0.25	4.80	3.25	1.125	4.50	0.50	2.38	2.187	0.50	1.125	5.50	1/4-20	0.19 / #8
3B-10	0.625	1600		6.50	1.00	0.56	0.22	5.00	3.75	6.25	0.25	5.75	3.75	1.375	5.25	0.63	2.38	2.375	0.60	1.313	6.50	1/4-20	0.19 / #8
3B-12	0.750	1880		7.50	1.30	0.80	0.25	6.00	4.50	7.20	0.25	6.70	4.50	1.500	6.00	0.75	2.75	2.937	0.75	1.500	7.50	5/16-18	0.22 / #10
3B-16	1.000	3400		9.00	1.30	0.74	0.28	7.25	5.50	8.70	0.35	8.00	5.50	1.750	7.00	1.00	3.37	3.437	0.75	1.750	9.00	3/8-16	0.28 / 1/4

\* Based on a travel of 2 million inches.