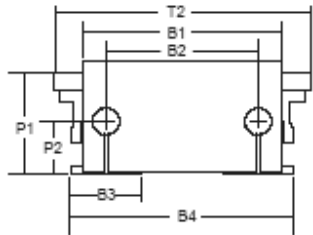
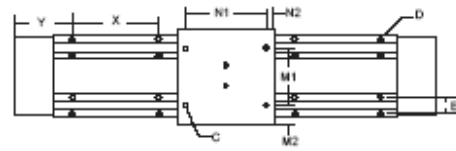
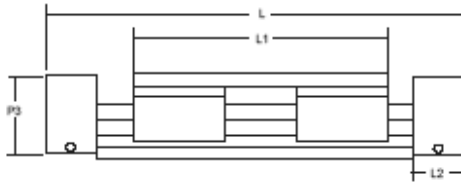
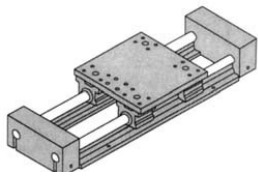


LINEAR MOTION STAGES



STAGE 4 TYPE A – CONTINUOUSLY SUPPORTED SYSTEM

Type A / Single Pillow Blocks



Unit: inch

Travel	Overall System Length (L)			
	4A-08	4A-10	4A-12	4A-16
6	13.5	14.5	16.1	17.6
12	19.5	20.5	22.1	23.6
18	25.5	26.5	28.1	29.6
24	31.5	32.5	34.1	35.6
30	37.5	38.5	40.1	41.6
36	43.5	44.5	46.1	47.6
42	49.5	50.5	52.1	53.6

Unit: inch

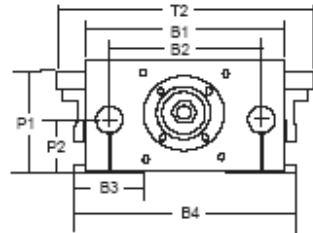
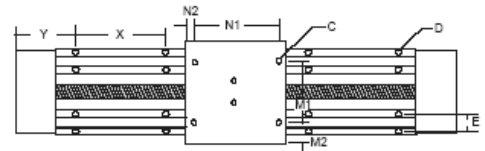
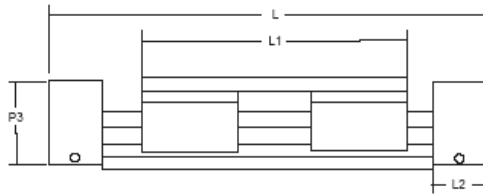
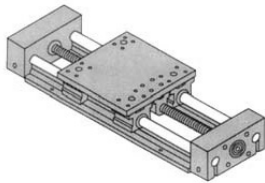
Part No.	Dia.	(lbs.) Max Load*	L	L1	L2	B1	B2	B3	B4	M1	M2	N1	N2	P1	P2	P3	T2	C	D Thru Hole / Bolt Size	E	X	Y
4A-08	0.500	920	See Below	5.50	1.00	4.25	3.25	1.50	4.75	3.25	1.125	4.50	0.50	2.187	1.125	2.38	5.50	1/4-20	0.17 / #6	1	4.00	2.75**
4A-10	0.625	1600		6.50	1.00	5.00	3.75	1.63	5.38	3.75	1.375	5.25	0.63	2.375	1.125	2.38	6.50	1/4-20	0.19 / #8	1-1/8	4.00	3.25**
4A-12	0.750	1880		7.50	1.30	6.00	4.50	1.75	6.25	4.50	1.500	6.00	0.75	2.937	1.500	2.75	7.50	5/16-18	0.22 / #10	1-1/4	6.00	2.05
4A-16	1.000	3400		9.00	1.30	7.25	5.50	2.13	7.63	5.50	1.750	7.00	1.00	3.437	1.750	3.37	9.00	3/8-16	0.28 / 1/4	1-1/2	6.00	2.80

* Based on a travel of 2 million inches.

** For 12", 24", and 36" travel lengths subtract 1" of "Y" dimension.

STAGE 4 TYPE B – CONTINUOUSLY SUPPORTED SYSTEM WITH BALL SCREW

Type B / Single Pillow Blocks



Unit: Inch

Travel	Overall System Length (L)			
	4B-08	4B-10	4B-12	4B-16
6	13.5	14.5	16.1	17.6
12	19.5	20.5	22.1	23.6
18	25.5	26.5	28.1	29.6
24	31.5	32.5	34.1	35.6
30	37.5	38.5	40.1	41.6
36	43.5	44.5	46.1	47.6
42	49.5	50.5	52.1	53.6

Various ball screw & lead screw options available. Please specify screw lead when ordering or call SMI for available options.

Unit: inch

Part No.	Dia.	(lbs.) Max Load*	L	L1	L2	B1	B2	B3	B4	M1	M2	N1	N2	P1	P2	P3	T2	C	D Thru Hole / Bolt Size	E	X	Y
4B-08	0.500	920	See Below	5.50	1.00	4.25	3.25	1.50	4.75	3.25	1.125	4.50	0.50	2.187	1.125	2.38	5.50	1/4-20	0.17 / #6	1	4.00	2.75**
4B-10	0.625	1600		6.50	1.00	5.00	3.75	1.63	5.38	3.75	1.375	5.25	0.63	2.375	1.125	2.38	6.50	1/4-20	0.19 / #8	1-1/8	4.00	3.25**
4B-12	0.750	1880		7.50	1.30	6.00	4.50	1.75	6.25	4.50	1.500	6.00	0.75	2.937	1.500	2.75	7.50	5/16-18	0.22 / #10	1-1/4	6.00	2.05
4B-16	1.000	3400		9.00	1.30	7.25	5.50	2.13	7.63	5.50	1.750	7.00	1.00	3.437	1.750	3.37	9.00	3/8-16	0.28 / 1/4	1-1/2	6.00	2.80

* Based on a travel of 2 million inches.

** For 12", 24", and 36" travel lengths subtract 1" of "Y" dimension.