

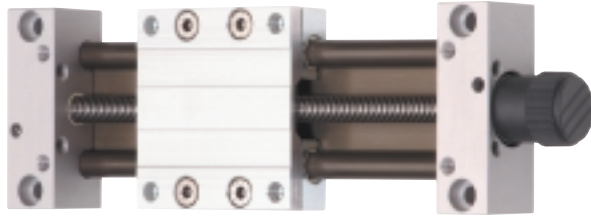


DryLin® Linear Slide Table

DryLin® Slide Tables

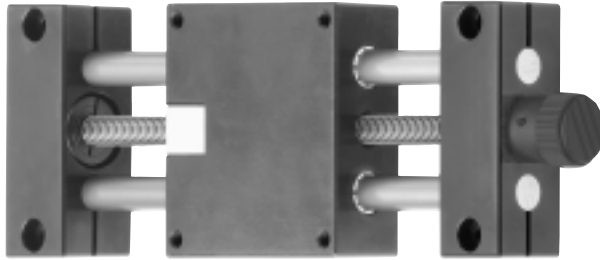
Telephone 1-888-803-1895
Fax 1-401-438-7680

Internet: <http://www.igus.com>
E-Mail: sales@igus.com
QuickSpec: www.igus.com/qs/DryLin.asp



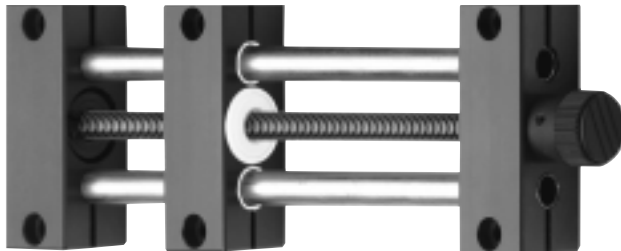
SLW – Compact*

Based on our innovative DryLin® W double rail system, the SLW table offers a fully supported rail with resistance to twisting and deflection. Available in two cost-effective sizes offering lubrication-free operation and a lower profile than most standard lead-screw table assemblies.



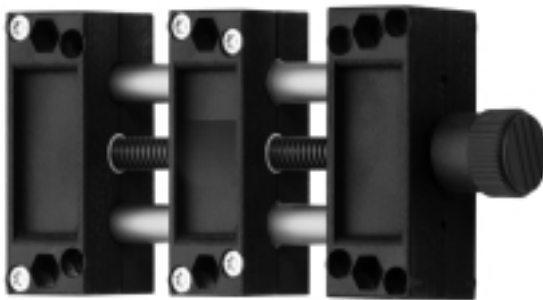
HTS – Basic*

The most flexible system for your application. HTS tables are available in 3 sizes. Choose from several shafting types and screw materials. The rugged blocks and our durable DryLin® R liners enable maintenance-free duty in extreme environments.



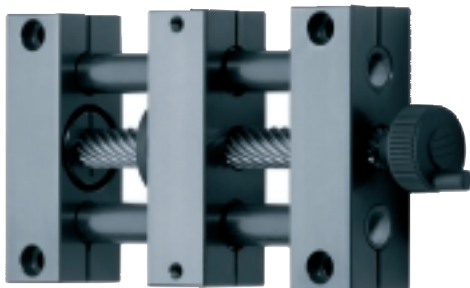
HTSC – Flexible*

HTSC offers all of the flexibility of the HTS slide table along with a compact carriage enabling optimized space for your application.



HTSP – Cost-effective*

Our most cost-effective unit for basic duties. Choose from 3 different sizes ranging from miniature to medium. All sizes offer lightweight and corrosion-free plastic blocks and carriages.



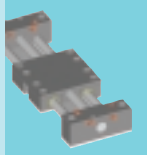
HTSS – Fast*

With 50mm and 100mm linear movement per revolution, these tables are the optimal product for quickly positioning small to medium loads. Available in two sizes.



ZLW – Belt Driven

For higher speed applications the ZLW Belt-Drive system offers clean and quiet high-performance. The system uses iglide® J glide pad technology, tough plastic end blocks, hard anodized aluminum rails, and requires no maintenance or lubrication



DryLin® Slide Table Key Features

DryLin® Linear Slide Tables were developed based on 40 years of testing and designing maintenance-free plastic bearing materials. All DryLin® slide tables use iglide® self-lubricating plastic liners that need no oil. More than 2,000 tests are performed on 200 materials each year. The time-tested, proven technology enables DryLin® slides to last in applications where expensive ball screws and slides fail.

Unlike ball bearings, contaminants cannot build up in DryLin®. This prevents performance degradation or shaft damage. DryLin® slide tables have a low coefficient of friction, are corrosion-resistant and wear-resistant. Because they are dry running, DryLin® tables are an ideal alternative to using bronze, especially when oil and grease will contaminate a cleanroom or wash-down application.

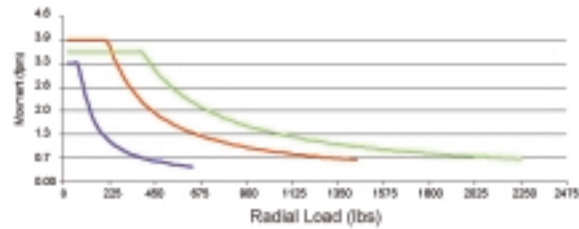
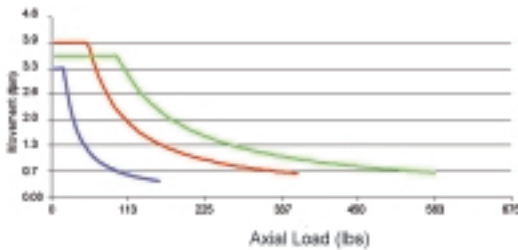
- Maintenance-free performance
- Lubrication-free plastic inserts
- Dry-running operation
- Excellent vibration dampening
- High static-load capacity
- Low profile
- Lightweight
- Corrosion resistant
- Chemical resistant
- Heavy Duty
- Flexible
- Self-locking screws
- Quiet operation
- Saves assembly time
- Save manufacturing costs
- Reduce purchasing costs



The charts shown below reflect continuous motion with no cool-down period. Higher speed / loads are possible for non-continuous movement.

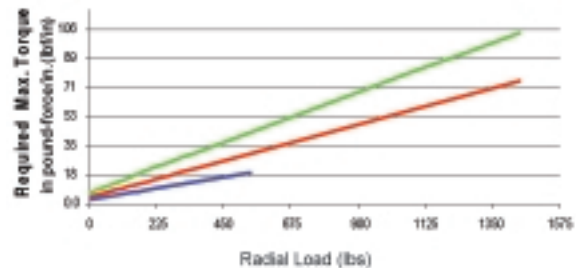
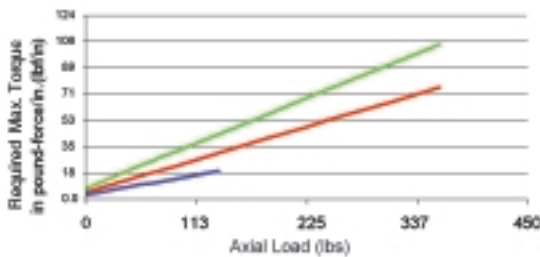
Permissible Movement Slide Table

DryLin® Lead Screw Table Maximum Linear Movement: (fpm)



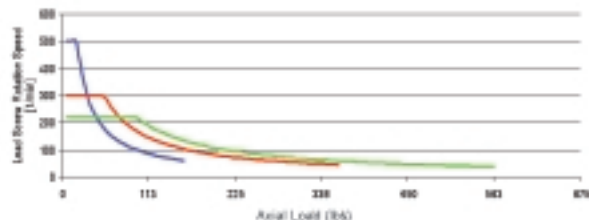
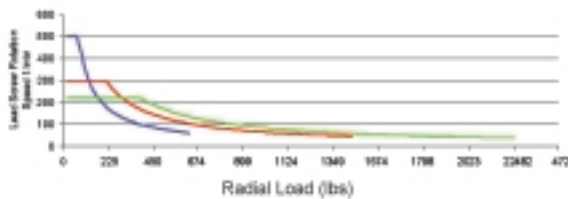
Required Torque

DryLin® Lead Screw Table Torque depending on the load:



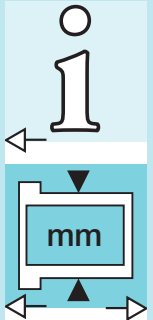
Permissible Rotation Speed

DryLin® Maximum Lead Screw Rotation Speed: (rpm)



DryLin®
Slide Tables

PDF: www.igus.com/pdf/DryLin.asp
Specs/CAD/RFQ: www.igus.com/DryLinN.asp
RoHS info: www.igus.com/RoHS.asp





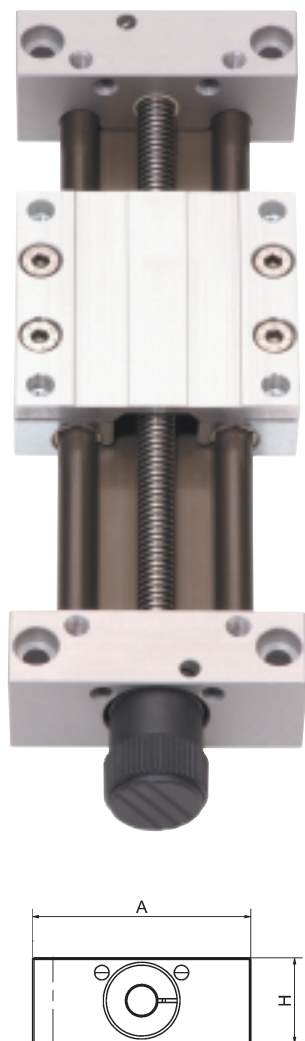
DryLin® Linear Slide Table - SLW

SLW

Slide Tables

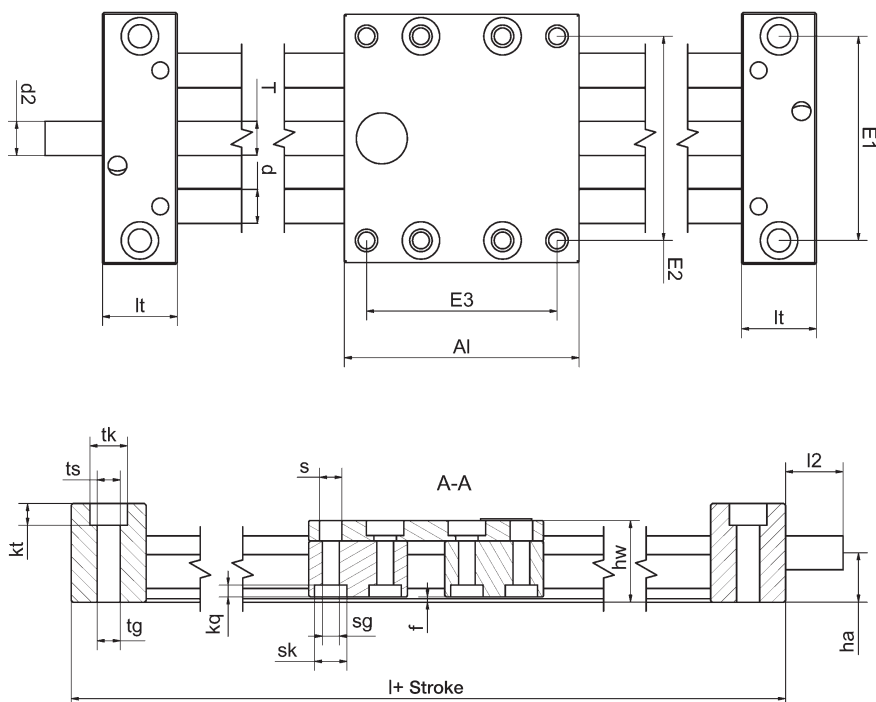
Telephone 1-888-803-1895

Fax 1-401-438-7680



Special properties

- Low-profile
- Rigid and torsion resistant
- Fully supported
- Hard anodized rail
- 2 sizes
- Zinc diecast end blocks
- Special version SLW-AL with end blocks made from anodized aluminum available on request
- Save on assembly time and cost



Length and Weight

Part No.	Maximum length	Weight	Shaft		Max. permissible axial load
	[mm]		[lbs]	Add. weight	
SLW-1040	1000	1.32	(0.1 m length)	0.1	157.4
SLW-1660	1000	3.31		0.3	264.56
SLW-2080	2000	6.62		0.4	359.7

Dimensions [mm]

Part No.	A	AI	H	E1	E2	E3	I	hw	f	lt	tk	ts	tg
	-0.3	-0.3		±0.15	±0.15	±0.15							
SLW-1040	74	69	29	60	60	56	113	24	1.5	22	11	6.8	M8
SLW-1660	100	100*	37	84	86	82	150	35	1.5	25	15	8	M10
SLW-2080	134	150	46	116	116	132	206	44	1.5	28	15	8.0	M10

Part No.	kt	s	sk	sg	kq	d	T	I2	d2	ha
	±0.1								standard	
SLW-1040	6.4	6.6	9.5	M6	4.4	10	TR10x2	17	TR10x2*	14.5
SLW-1660	8.6	—	11	M6	5.5	16	TR14x4	20	TR14x4	18.5
SLW-2080	8.6	9.0	14.0	M8	5.5	20	TR18x4	26	12 h9	23.0

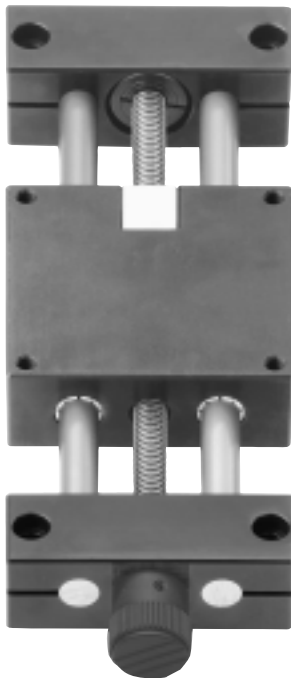
* TR10x2 without journaled end

*TR14x4 without journaled end

Internet: <http://www.igus.com>

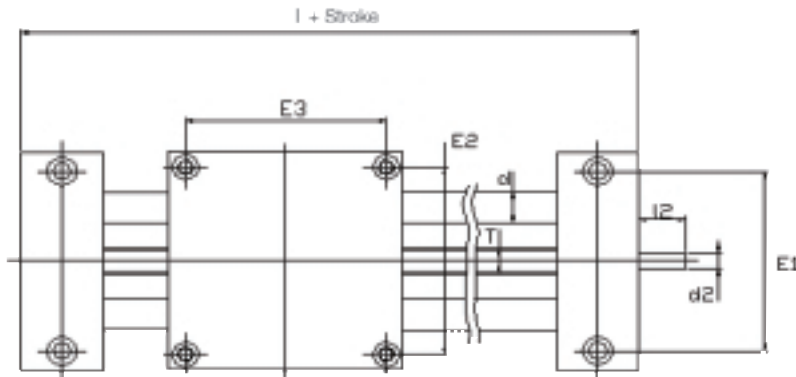
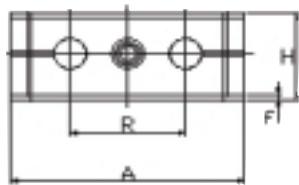
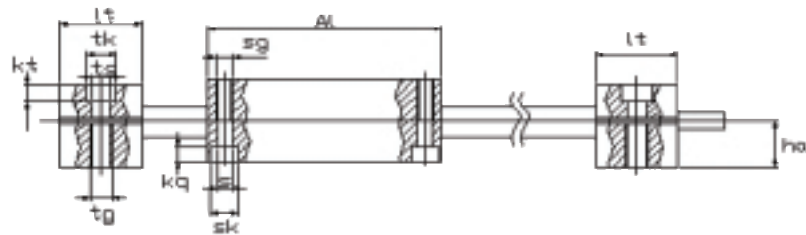
E-Mail: sales@igus.com

QuickSpec: www.igus.com/qs/DryLin.asp



Special properties

- Solid design
- 3 different sizes
- Different shaft and leadscrew materials offer high flexibility
- Maintenance-free and corrosion resistant



Spindles also available in stainless steel and hard-anodized aluminum.
 Shafting also available in stainless steel and hardened steel.

Length and Weight

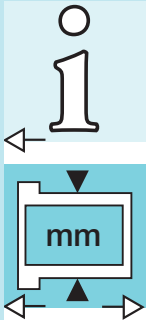
Part No.	Maximum length [mm]	Aluminum shaft		Steel shaft		Maximum Static Axial Load (lbs)
		Weight [kg]	Add. weight (0.1 m length)	Weight [kg]	Add. weight (0.1 m length)	
HTS-12-AWM	1000	1.1	0.1	1.3	0.2	154
HTS-20-AWM	2000	3.2	0.3	3.9	0.6	353
HTS-30-AWM	2000	8.6	0.6	10.9	1.4	551

Dimensions [mm]

Part No.	A	Al	H	E1	E2	E3	I	R	f	lt	tk	ts	tg
	-0.3	-0.3		±0.15	±0.15	±0.15				±0.1			
HTS-12-AWM	85	85	34	70	73	73	145	42	2	30	11	6.6	M8
HTS-20-AWM	130	130	48	108	115	115	202	72	2	36	15	9.0	M10
HTS-30-AWM	180	180	68	150	158	158	280	96	4	50	20	13.5	M16

Part No.	kt	s	sk	sg	kq	d	T	I2	d2	ha
	±0.1								standard	
HTS-12-AWM	6.4	6.3	10	M6	6.0	12	TR10x2	17	TR10x2*	18
HTS-20-AWM	8.6	6.4	11	M8	7.0	20	TR18x4	26	12 h9	23
HTS-30-AWM	12.6	11.0	18	M12	10.6	30	TR24x5	38	14 h9	36

* TR10x2 without journaled end





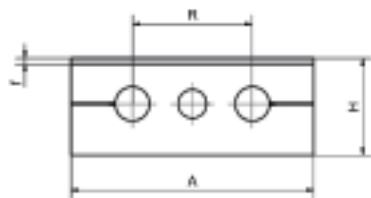
DryLin® Linear Slide Table - HTSC

HTSC

DryLin® Slide Tables

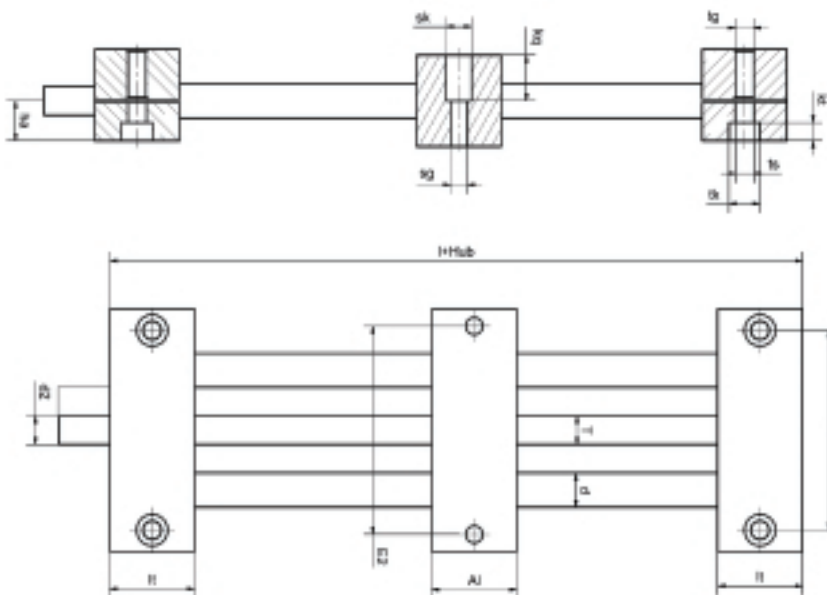
Telephone 1-888-803-1895

Fax 1-401-438-7680



Special properties

- Solid flexible design
- deal for 2 carriages
- Dry running and maintenance-free
- 3 sizes



Spindles also available in stainless steel and hard-anodized aluminum.
Shafting also available in stainless steel and hardened steel.

Length and Weight

Part No.	Maximum length [mm]	Aluminum shaft		Steel shaft		Maximum Static Axial Load (lbs)
		Weight [lbs]	Add. weight (0.1 m length)	Weight [lbs]	Add. weight (0.1 m length)	
HTSC-12-AWM	1000	1.54	0.1	1.76	0.2	154
HTSC-20-AWM	2000	4.19	0.3	5.07	0.6	353
HTSC-30-AWM	2000	10.14	0.6	12.79	1.4	551

Other dimensions [mm]

Part No.	A	Al	H	E1	E2	E3	I	R	f	lt	tk	ts	tg
	-0.3	-0.3		±0.15	±0.15	±0.15				±0.1			
HTSC-12-AWM	85	30	34	70	73	-	90	42	2	30	11	6.6	M8
HTSC-20-AWM	130	36	48	108	115	-	108	72	2	36	15	9.0	M10
HTSC-30-AWM	180	50	68	150	158	-	150	96	4	50	20	13.5	M16

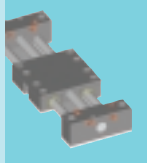
Part No.	kt	s	sk	sg	kq	d	T	l2	d2	ha
	±0.1								standard	
HTSC-12-AWM	6.4	-	10	M6	6.0	12	TR10x2	17	TR10x2*	18
HTSC-20-AWM	8.6	-	11	M8	7.0	20	TR18x4	26	12 h9	23
HTSC-30-AWM	12.6	-	18	M12	10.6	30	TR24x5	38	14 h9	36

* TR10x2 without journaled end

Internet: <http://www.igus.com>

E-Mail: sales@igus.com

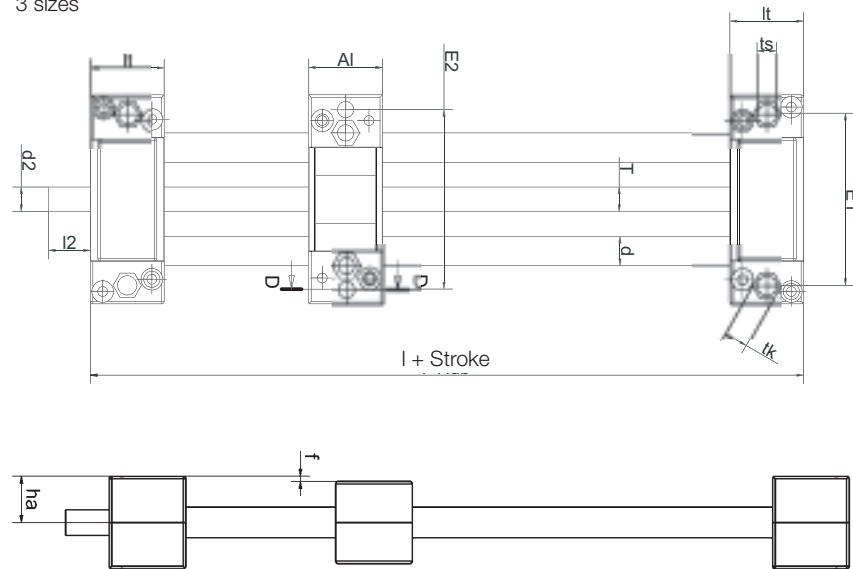
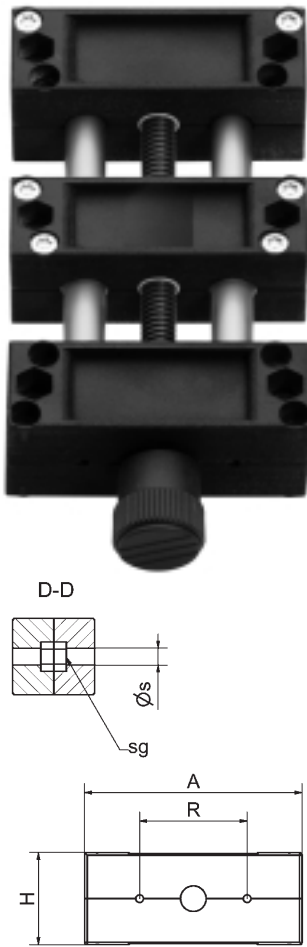
QuickSpec: www.igus.com/qs/DryLin.asp



Equipped with plastic crossbars and plastic slides, this linear-spindle table high value at a low cost. The plastic material significantly lowers weight while providing sufficient strength of the linear unit. All gliding elements are made with iglide® plastic materials completely eliminating the need for lubrication and maintenance. The linear-spindle table has a completely corrosion-free design. Its stroke is continuously adjustable, either manually or via a servo motor.

Special properties

- Solid plastic version
- Lightweight
- Cost-effective
- Corrosion resistant
- 3 sizes



Spindles also available in stainless steel and hard-anodized aluminum.
Shafting also available in stainless steel and hardened steel.

Length and Weight

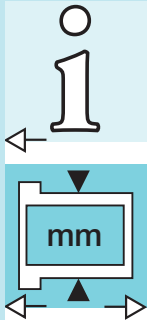
Part No.	Maximum length [mm]	Aluminum shaft		Special Properties	Maximum Static Axial Load (lbs)
		Weight [kg]	Add. weight (0.1 m length)		
HTSP-01-06	300	0.11	0.06	—	55
HTSP-01-12	750	0.35	0.11	Liners and TR nuts made from iglide® J	77
HTSP-02-12	750	0.35	0.11	—	77

Dimensions [mm]

Part No.	A	AI	H1	E1	E2	E3	I	R	f	lt	tk	ts
	-0.3	-0.3		±0.15	±0.15	±0.15				±0.1		
HTSP-01-06	45	45	18	38	36.5	36.5	67	25	1	11	8	4.2
HTSP-01-12	85	30	32	70	73	-	90	42	2	30	10	6.6
HTSP-02-12	85	30	32	70	73	-	90	42	2	30	10	6.6

Part No.	kt	s	sg	d	T	l2	d2*	ha	H
	±0.1						standard		
HTSP-01-06	3.0	5.0	-	6	M8	15	M8	9	19
HTSP-01-12	10.0	6.3	M6	12	TR10x2	17	TR10x2	16	36
HTSP-02-12	10.0	6.3	M6	12	TR10x2	17	TR10x2	16	36

* Standard versions without journaled end





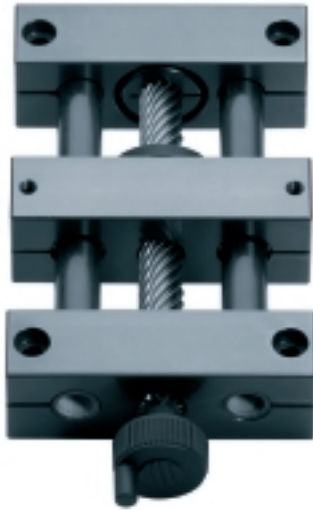
DryLin® Linear Slide Table - HTSS

HTSS

Slide Tables

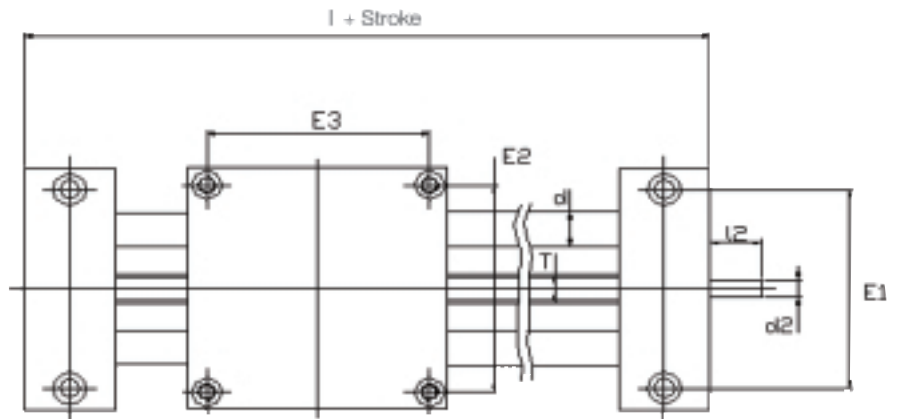
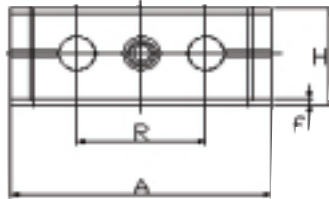
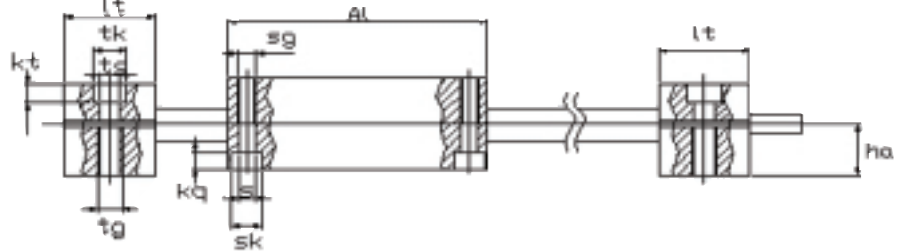
Telephone 1-888-803-1895

Fax 1-401-438-7680



Special properties

- High pitch leadscrew
- Highspeed solution
- Maintenance-free
- Dry running



Shafting also available in stainless steel and hardened steel.

Length and Weight

Part No.	Maximum length [mm]	Aluminum shaft	
		Weight [kg]	Add. weight (0.1 m length)
HTSS-12-AWM	1000	1.54	0.1
HTSS-20-AWM	2000	4.19	0.3

Other dimensions [mm]

Part No.	A	Al	H	E1	E2	E3	l	R	f	l _t	tk	ts	tg
HTSS-12-AWM	-0.3	-0.3		±0.15	±0.15	±0.15				±0.1			
HTSS-12-AWM	85	85	34	70	73	73	145	42	2	30	11	6.6	M8
HTSS-20-AWM	130	130	48	108	115	115	202	72	2	36	15	9.0	M10

Part No.	kt	s	sk	sg	kq	d	T	l ₂	d ₂	ha
HTSS-12-AWM	±0.1								standard	
HTSS-12-AWM	6.4	6.3	10	M6	6.0	12	TR10x50	17	TR10x50*	18
HTSS-20-AWM	8.6	6.4	11	M8	7.0	20	TR18x100	26	12 h9	23

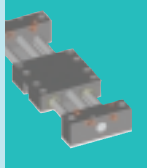
* TR10x50 without journaled end

Photo shows HTSS with short carriage (special version HTSCS)

Internet: <http://www.igus.com>

E-Mail: sales@igus.com

QuickSpec: www.igus.com/qs/DryLin.asp



Quick Positioning Without Lubrication



The DryLin® ZLW cogged-belt drive was developed for the quick positioning of small loads using our advanced plastic bearing technology. These linear units are corrosion resistant, light, and compact- allowing greater flexibility in design than other linear technology.

Like all DryLin® products the ZLW are designed for maintenance-free operation without lubrication. This makes ZLW ideal for dirty, dusty environments where more expensive ball guided systems fail.

There are two versions of the ZLW available:

Version 1 - Original

The pulleys, drive shaft, and linear guide bearings are all made from iglide® maintenance-free plastic bearings. The complete drive unit is lubricant-free and is suitable for use underwater. It can reach speeds up to 6.5 feet-per-second.

Version 2 - High Speed

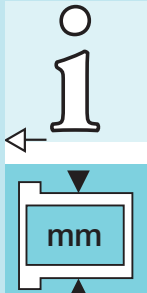
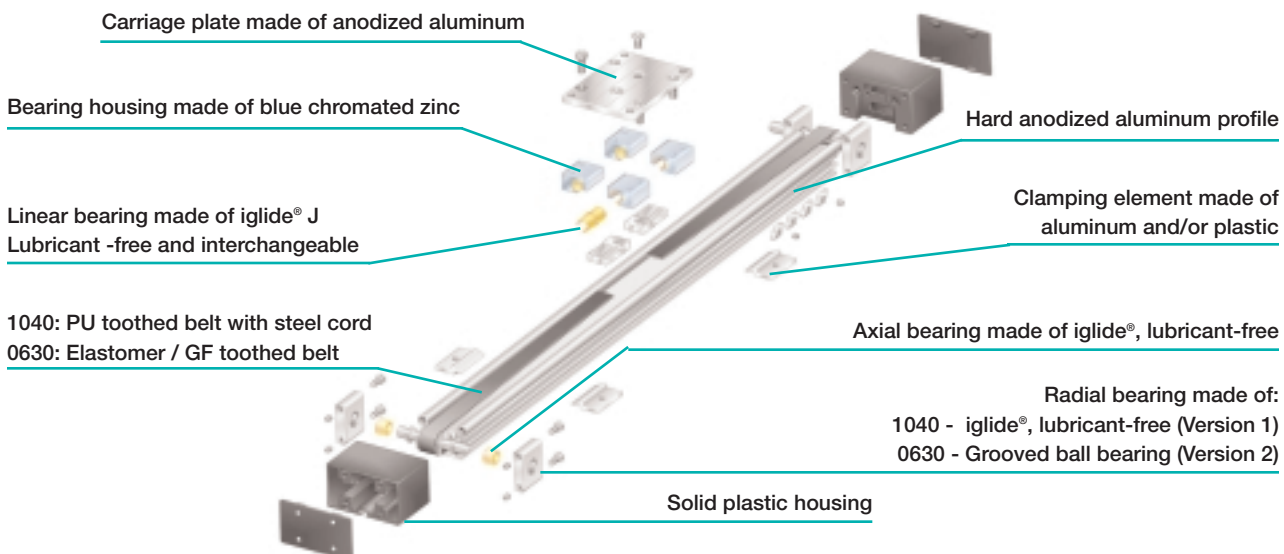
In this version, roller bearings are used in pulley system allowing speeds up to 16 feet-per-second.

Technical Data

Part No.	Weight w/o Stroke (lbs)	Weight 100m Stroke (lbs)	Max Stroke Length (mm)	Transmission (mm/U)	Toothed Belt	Width (mm)	Tension (N)	Max Radial Stress (N)	Guide Bearing	Max Speed at 60% on-time (fps)
ZLW-1040										
Version 1	2.20	.308	1,000	70	PU w/steel	16	75	300	iglide	6.5
Version 2	2.20	.308	2,000	70	PU w/steel	16	200	300	Ball Bearing	16

Part No.	Weight w/o Stroke (lbs)	Weight 100m Stroke (lbs)	Max Stroke Length (mm)	Transmission (mm/U)	Toothed Belt	Width (mm)	Tension (N)	Max Radial Stress (N)	Guide Bearing	Max Speed at 60% on-time (fps)
ZLW-0630										
Version 1	.95	.176	500	54	Elastomer/GF	9	35	100	iglide	3.28
Version 2	.95	.176	1,000	54	Elastomer/GF	9	70	100	Ball Bearing	6.56

Assembly of the Belt Drive

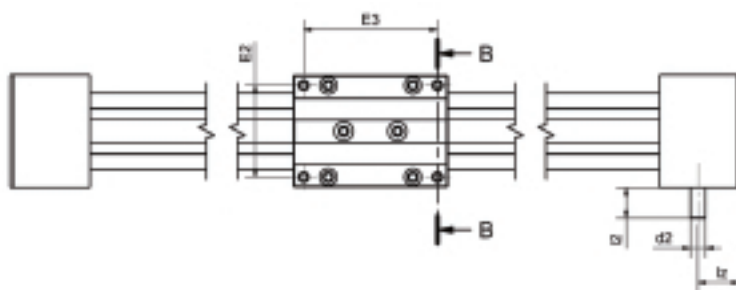
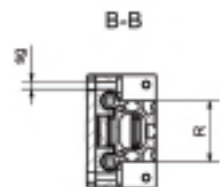
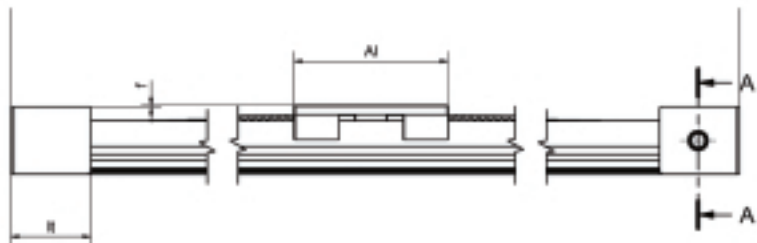
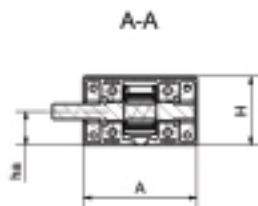




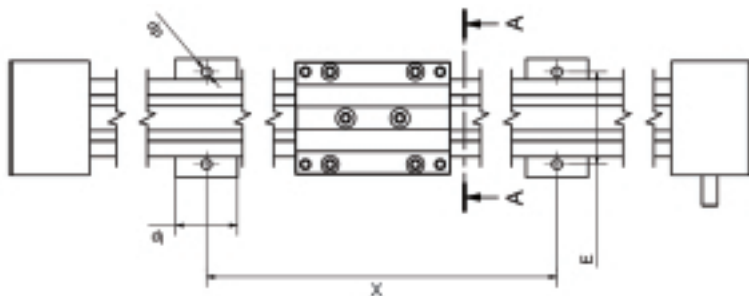
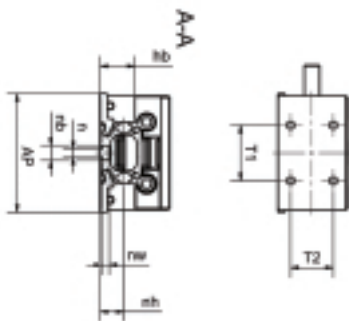
DryLin® Linear Slide Table - ZLW

ZLW

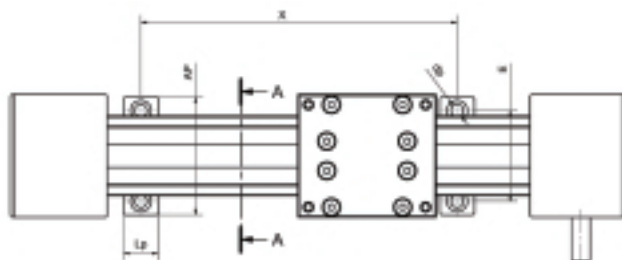
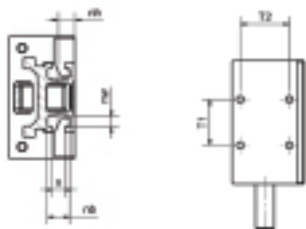
Slide Tables



ZLW-1040



ZLW-0630



Part No.	A	Al	H	E2	I	E3	R	f	lt	sg	ha	lz	l2	d2
	-0.3			±0.15		±0.15	±0.15		±0.3					h9
ZLW-1040	74	100	45	60	204	87	40	1	52	M6	22	27	20	10
ZLW-0630	54	60	31	45	144	51	30	3	42	M4	14	22	20	8

Part No.	X	E	AP	LP	dp	n	nb	nw	nh	T1	T2	d
		-0.2	-1									
ZLW-1040	adjustable	60	78	40	6.4	5.2	9.5	4.3	15.5	36	27	5.0
ZLW-0630	adjustable	40	52	15	5.5	5.2	9.5	4.3	7	20	21	3.2

Telephone 1-888-803-1895

Fax 1-401-438-7680

Internet: <http://www.igus.com>

E-Mail: sales@igus.com

QuickSpec: www.igus.com/qs/DryLin.asp